



TUBE Fittings

Nordson MEDICAL offers barbed tube fittings and tubing connectors in sizes ranging from 1/16" (1.6 mm) to 1.5" (38.1 mm) tubing ID in over 100 separate configurations in nylon, polypropylene, polycarbonate and PVDF, with other engineering resins available on special order. Available barb fitting styles include straight tube connectors, elbow fittings, tee fittings, crosses, Y (wye) connectors, multi-port connectors, and multiple straight, elbow and tee reducer combinations

FEATURES & BENEFITS

- Configurations including straight tube connectors, Y connectors, multiport connectors, elbow fittings, tee fittings, all with optional reducers as well.
- Sizes ranging from 1/16" (1.6 mm) to 1.5" (38.1 mm) ID.
- Several barb styles offered to provide designers the widest range of assembly forces, pulloff resistance and blowoff resistance, without the need for clamps.
- High-volume cross connectors available that allow superior flow, ideal for commercial applications.

MATERIALS

- Available in standard resins such as nylon, polypropylene, polycarbonate, polyvinylidene fluoride (PVDF), with other engineering resins by special order.

BARB STYLES

- Available barbed fitting styles include straight tube connectors, elbow fittings, tee fittings, crosses, Y (wye) connectors, multi-port connectors, and multiple straight, elbow, and tee reducer combinations.

AVAILABLE BARB STYLES



Straight Throughs



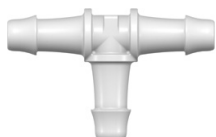
Straight Through Reducers



Elbows



Elbow Reducers



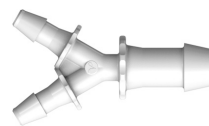
Tees



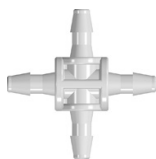
Tee Reducers



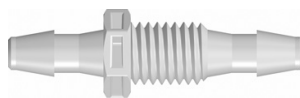
Ys



Y Reducers



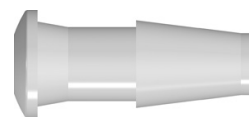
Multiports



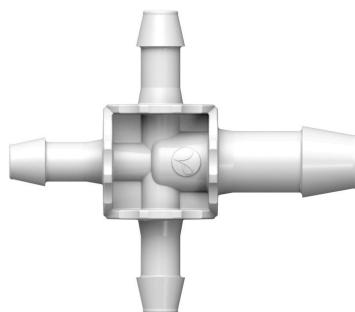
Panel Mounts & Accessories



Ultrasonically Weldable Barbs



Press-in Plugs



Multiport Reducers